



Loading blade

Induction heating

● Mechanical engineering

● Realizations

○ Cabling

○ Machines

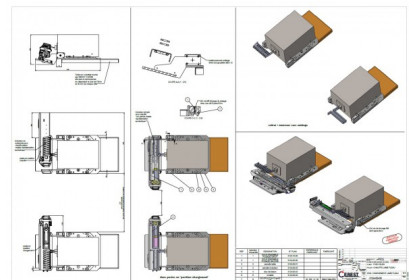
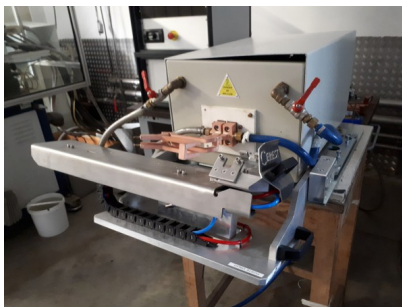
The loading tool has **two mobile drawers**, one right and one left with a receptacle for the blade to be heated.

This blade is placed **manually by an operator**, who then engages the drawer in the inductor. Once heating is complete. The operator pulls the drawer out of the inductor and retrieves the hot board with pliers.

The tool is designed to be **easily detached** from the inductor table.

SPECIFICATIONS :

- **Different receptacles**
- **Quick installation change**
- **Easy to handle drawer**



Reference : 3124

Project added the 15/09/20



CEREST
20 Rue des Frères Lumiere
68000 Colmar - FRANCE



EMAIL
cerest@cerest.com



PHONE
+33 (0)3.89.21.02.56



INTERNET
www.cerest.com