



# Double diameter coil template

With rotating frame

● Mechanical engineering

● Realizations

○ Cabling

○ Machines

This mechanical assembly is a welding template. It is used to position sleeves and reinforcing bars before welding on Ø430 and Ø480 water heater coils, with sleeve centres of 320 mm, 560 mm, 1180 mm and 1120 mm.

The rotating frame placed on the frame by means of a slewing ring offers 360° rotation. Rotation is immobilised in the 0° and 180° positions by means of a lock.

The coils are positioned using combs to ensure the correct spacing between the coils.

The sleeves are positioned and held in position on the coil by two double-shell centring devices, which can be opened to facilitate loading and unloading.

Campaigns (diameter and length) can be changed quickly thanks to pre-set fixed stops.

The ergonomics of the workstation have been specially designed to enable welders to work in the best possible conditions. (Working height, access, etc.)

SPECIFICATIONS :

- **Double diameter (430-480)**
- **Different coil lengths**

**Quick adjustment between campaign changes.**



**CEREST**

20 Rue des Frères Lumière  
68000 Colmar - FRANCE



**EMAIL**

cerest@cerest.com



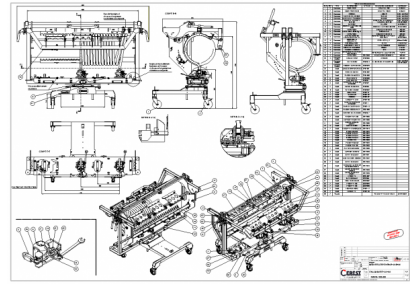
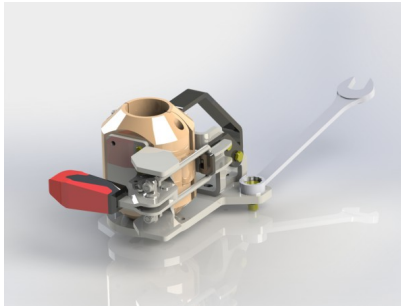
**PHONE**

+33 (0)3.89.21.02.56



**INTERNET**

www.cerest.com



Reference : 3823  
Project added the 07/11/24

