



# Rollomixer

## Retrofit

- **Mechanische Studien**      ● **Realisierungen**      ● **Verkabelung**      ○ **Steuerungen**

This project involves retrofitting a horizontal axis mixer **to comply with current CE and ATEX standards.**

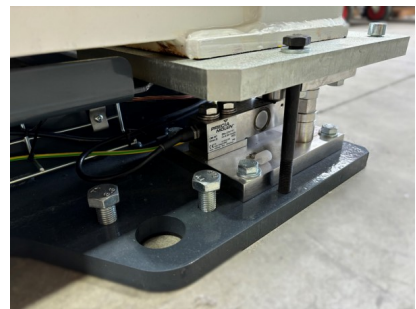
Fitted with mixing paddles and a bucket wheel, the original machine allows pellets to be loaded via the high inlet of the shutter system, then the mixed product to be discharged.

Various **functions have now been added:**

- Integration of a **weighing system** via 4 load cells
- Integration of **coded locks** with captive key concept for **anti-blocking** (ATEX compatible)
- Change of **geared motor** and integration of a brake
- Addition of a **bypass position** to the loading/unloading flap
  
- Compliance with **ATEX standards** (100% compatible components, rigorous earthing, etc.)
- Complete overhaul of the **pneumatic system**
- ...

SPECIFICATIONS :

- **Mixing capacity: 1.5T**
- **Load cell accuracy: +/- 1 Kg**
- **Tare weight: 3.5T**
- **ATEX 2/22 compatible**



Ref : 3645

Leistung hinzugefügt 17/10/24



**CEREST**

20 Rue des Frères Lumière  
68000 Colmar - FRANCE



**MAIL**

cerest@cerest.com



**TELEFONISCH**

+33 (0)3.89.21.02.56



**INTERNET**

www.cerest.com